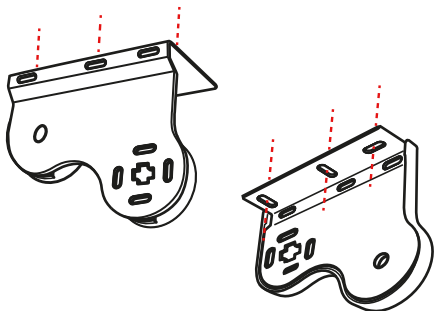


Double Roller Blind Fitting Instructions:

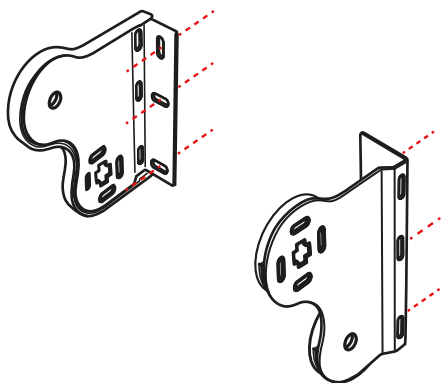
Step 1:



TOP FIXING

Hold each bracket into place and mark the hole positions.

Fit each bracket with suitable screws. Please ensure fixings are suitable for the wall/surface to which you are mounting the brackets.



FACE FIXING

Hold each bracket into place and mark the hole positions.

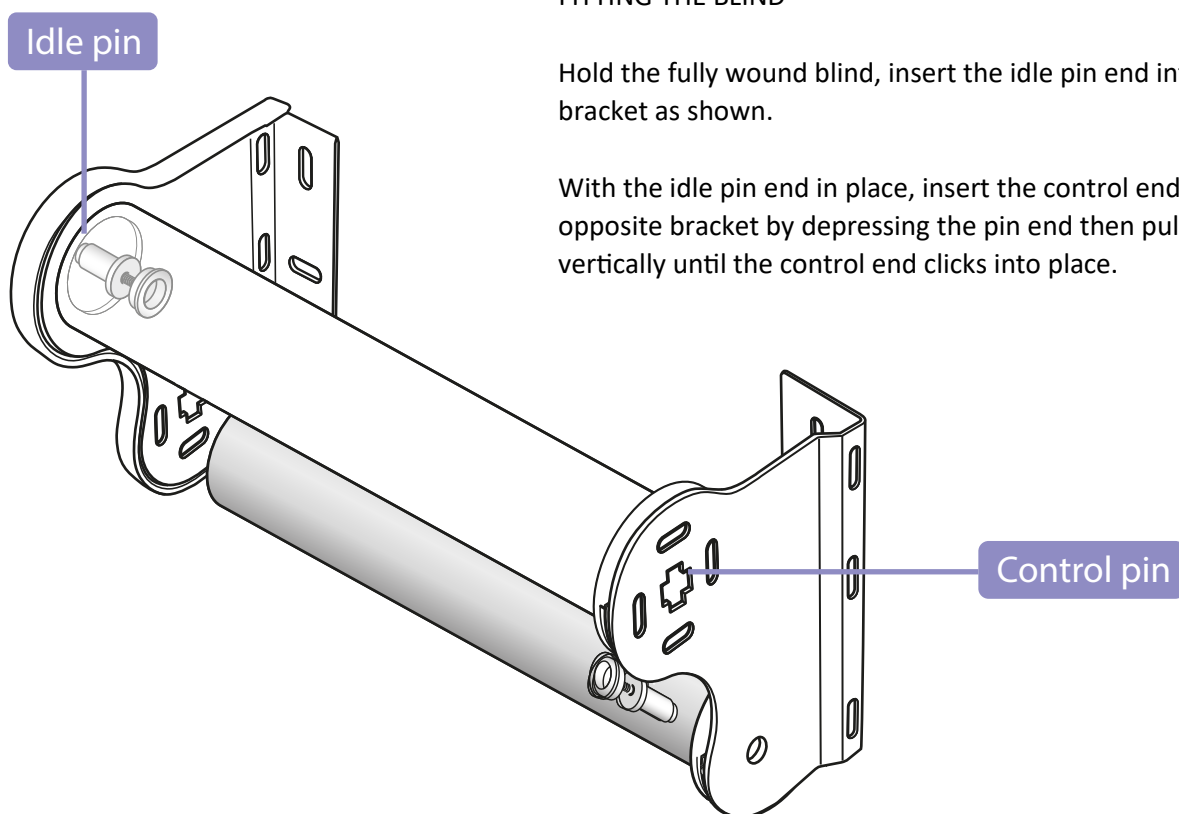
Fit each bracket with suitable screws. Please ensure fixings are suitable for the wall/surface to which you are mounting the brackets.

Step 2:

FITTING THE BLIND

Hold the fully wound blind, insert the idle pin end into the bracket as shown.

With the idle pin end in place, insert the control end into the opposite bracket by depressing the pin end then pull down vertically until the control end clicks into place.

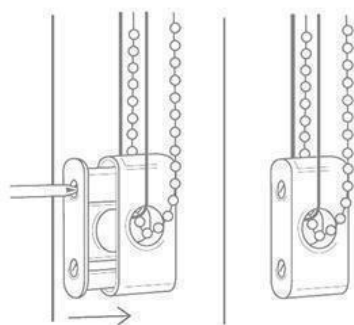


WARNING

Young children can be strangled by loops in pull cords, chains, tapes and inner cords that operate the product. Always use a safety device to keep cords or chains out of reach of children.

To avoid strangulation and entanglement, keep cords out of the reach of young children. Cords may become wrapped around a child's neck. Move beds, cots and furniture away from window covering cords.

Do not tie cords together. Make sure cords do not twist and create a loop.



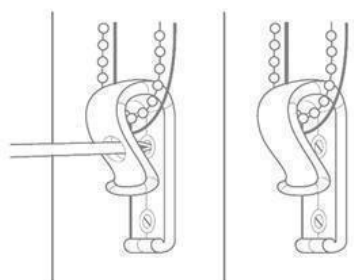
SAFETY DEVICE

The safety device must be installed at the maximum distance possible from the control mechanism to prevent looped chain becoming slack.

Place the safety device on the wall and mark the positioning of the 2 screw holes.

Drill holes using a suitable drill bit.

Place device into position ensuring the chain is fully taut.



RETAINING DEVICE

Screw the retaining device using suitable fixings ensuring the device is fully closed.

(If your blind is supplied with our child safe draw rod control option, there is no requirement to fit an additional child safety device)