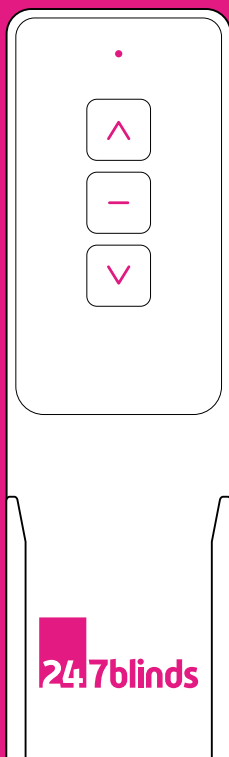


247blinds

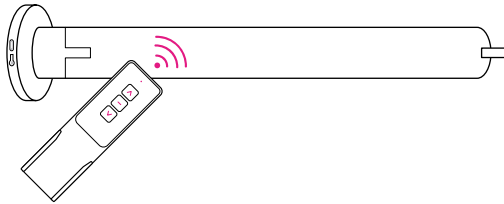
ELECTRIC BLIND

Operating Instructions



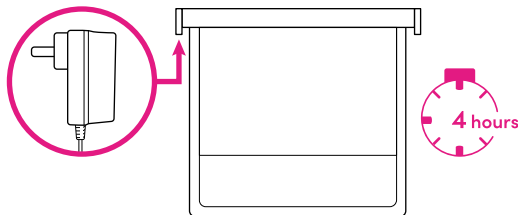
KEY FEATURES

- Energy-saving patent.
- Rechargeable battery.
- Using the remote control, set up to 6 limits, including an upper limit, a lower limit, and 4 middle positions.
- Short/open circuit protection.



RECHARGING THE BATTERY

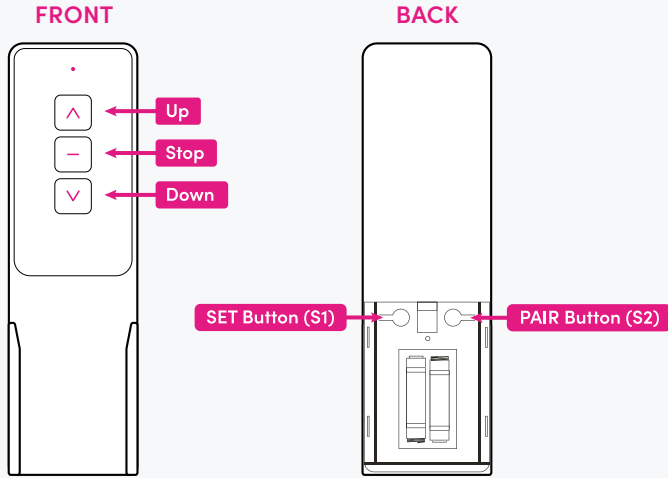
- Built-in Rechargeable Lithium Battery Pack.
- Recharge using an external charger (5V DC 1.0A)
- If battery is low, red light will flash, motor will switch to jog mode.
- The indicator light turns red when charging and green when charging is finished.
- Charge time is 4 hours.
- A full charge will last 4 - 5 months.



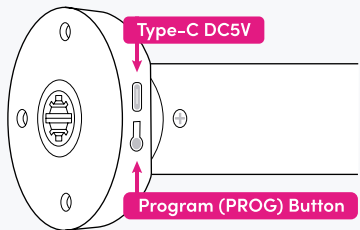
CAUTION!

Please charge lithium battery devices at least 6 hours every 6 months to extend battery life.

REMOTE FEATURES



MOTOR HEAD FEATURES

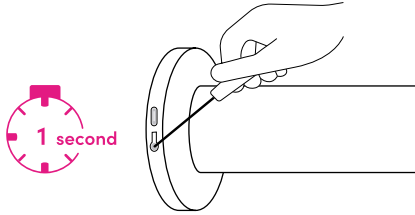


NOTE: Once programming has started if there is no action in 10 seconds, the motor will exit programming automatically indicated by the motor jogging once.

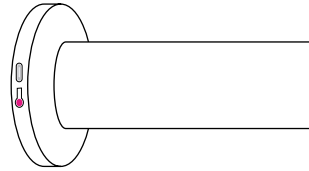
OPERATING INSTRUCTIONS

* Before operation, please ensure battery is fully charged.

SWITCHING ON:

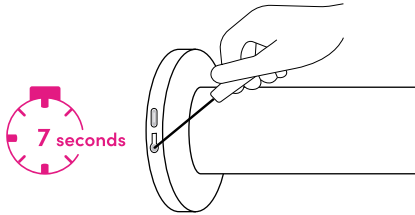


Press the **PROG** button on the motor head for **1 second** until the red light indicator comes on.

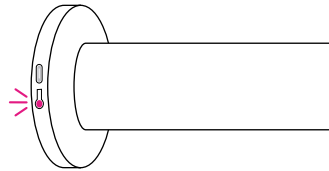


The motor is now **ON**.

SWITCHING OFF:



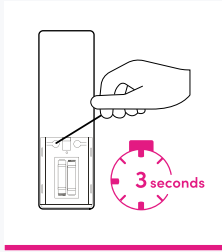
Press the **PROG** button on the motor head for **7 seconds**, the motor will jog for **1 second**.



When the red indicator light flashes 3 times, the motor is now **OFF**.

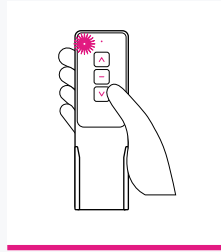
PAIRING THE REMOTE

If using a multi channel remote, select the desired channel using the channel selector before pairing the remote. Channels are indicated via a blue light.



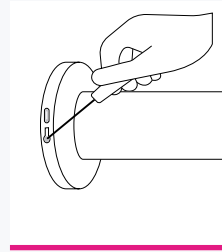
STEP 1

Using a pin, press the **PAIR** button on the back of the remote for **3 seconds**.



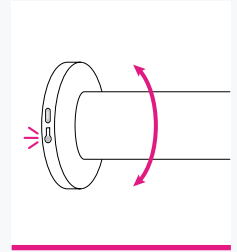
STEP 2

The channel indicator on the remote will flash.



STEP 3

Press the **PROG** button on the motor 5 times. On the 5th time, press and hold the button.

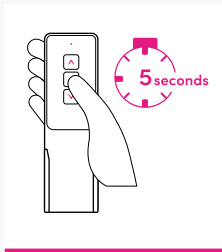


STEP 4

The motor will jog once and a green light will flash, indicating that the remote has been successfully paired.

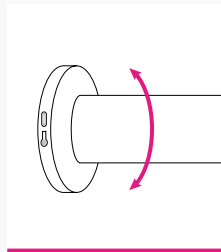
ADJUSTING ROTATIONAL DIRECTION

If desired, motor direction can be changed.



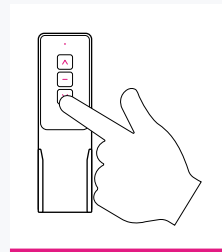
STEP 1

Press and hold **STOP** on the paired remote for **5 seconds**.



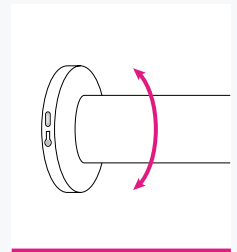
STEP 2

The motor will jog once.



STEP 3

Press the **DOWN** button on the remote.

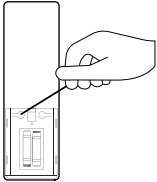


STEP 4

The motor will jog once to indicate direction change.

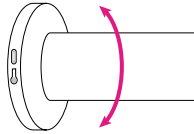
SETTING THE UPPER LIMIT

Once limit setting is started, complete the limit setting process fully. Adjusting rotation direction and fine-tuning limits can be modified afterwards.



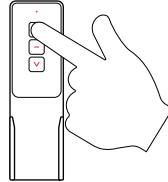
STEP 1

Using a pin, press the **SET** button on the back of the remote.



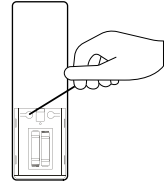
STEP 2

The motor will jog once, to indicate the motor is now in limit setting mode.



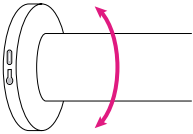
STEP 3

Press the **UP** button on the remote until the blind reaches the desired upper position, then press **STOP**.



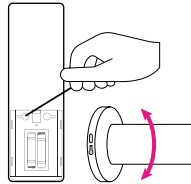
STEP 4

Press the **SET** button on the back of the remote.



STEP 5

The motor will jog once, to indicate the upper limit has been set.

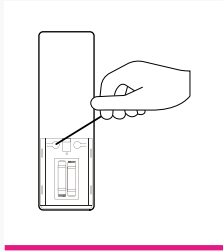


STEP 6

Press the **SET** button again to confirm upper limit. The motor will jog once to indicate the limit has been **confirmed**.

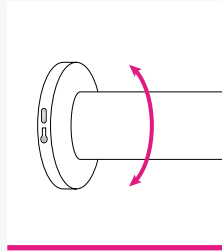
SETTING THE LOWER LIMIT

Once limit setting is started, complete the limit setting process fully. Adjusting rotation direction and fine-tuning limits can be modified afterwards.



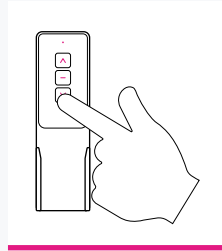
STEP 1

Using a pin, press the **SET** button on the back of the remote.



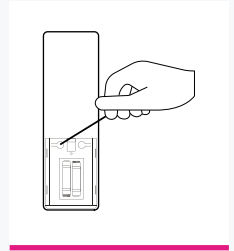
STEP 2

The motor will jog once, to indicate the motor is now in limit setting mode.



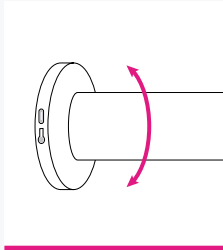
STEP 3

Press the **DOWN** button on the remote until the blind reaches the desired lower position, then press **STOP**.



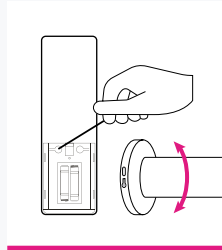
STEP 4

Press the **SET** button on the back of the remote.



STEP 5

The motor will jog once, to indicate the lower limit has been set.

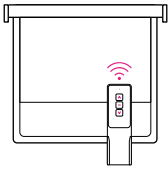


STEP 6

Press **SET** button again to confirm lower limit. The motor will jog once to indicate the limit has been **confirmed**.

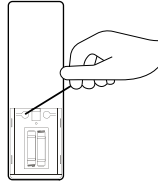
SETTING MIDDLE LIMITS

Maximum 6 limits, including an upper limit, a lower limit, and 4 middle positions.



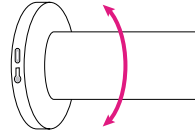
STEP 1

Move the blind to the desired position.



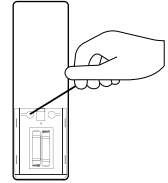
STEP 2

Press the **SET** button on the back of the remote.



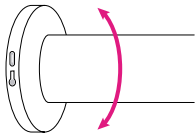
STEP 3

The motor will jog once, to indicate motor is now in limit setting mode.



STEP 4

Press the **SET** button again on the back of the remote.



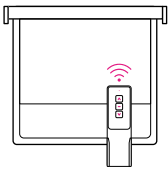
STEP 5

Once the motor jogs, the new limit position is set and **confirmed**.

NOTE: When middle limits are set, you can move the blind directly to the upper or lower limit by pressing the up or down button twice, with a gap of 1 second between presses. The blind will bypass any middle positions and move continuously to the selected limit, regardless of the blind's current position.

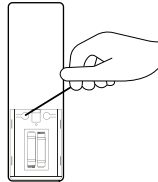
FINE-TUNING

Each limit position can be fine-tuned or deleted separately, excluding the first limit position, which can only be deleted when all limit memories have been deleted.



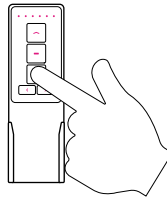
STEP 1

Move the blind to the limit you wish to fine-tune.



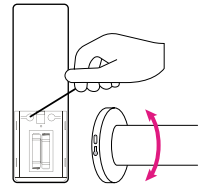
STEP 2

Press the **SET** button on the back of the remote until the motor jogs once.



STEP 3

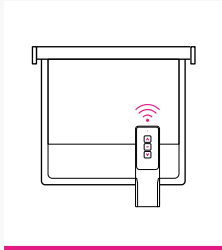
Using the **UP** or **DOWN** arrows, fine-tune the blind to the desired position.



STEP 4

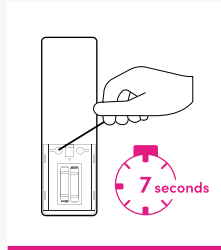
Press the **SET** button until the motor jogs once. Fine-tuning will now be complete.

DELETING THE LIMITS



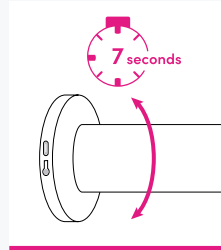
STEP 1

Move the blind to the limit you wish to delete.



STEP 2

Hold the **SET** button at the back of the remote for **7 seconds**. Motor will jog within 1 second, continue to hold.



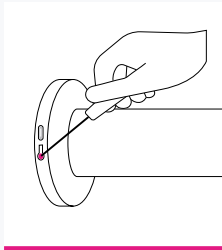
STEP 3

The motor will jog again after the 7th second to indicate the limit position is now **deleted**.

DELETING ALL MEMORY

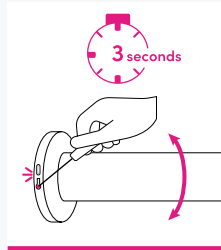
Deleting all memory will return the motor back to factory settings.

NOTE: Steps 1, 2 and 3 need to be performed within 5 seconds of each other.



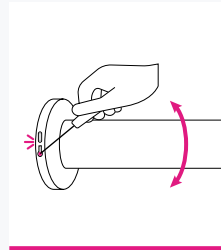
STEP 1

Press the **PROG** button on the motor until the red light turns on then repeat this.



STEP 2

Press and hold the **PROG** button on the motor for **3 seconds**, the red light will flash.



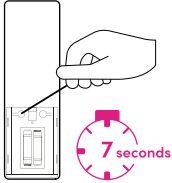
STEP 3

Press and hold the **PROG** button on the motor until it jogs twice. The memory has now been **deleted**.

REMOVING A REMOTE/CHANNEL

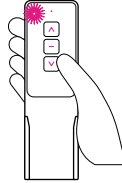
If desired, a remote or channel can be removed without deleting the limits.

If removing a channel from a multi channel remote, select the desired channel using the channel selector. If removing the multi-channel remote completely, select all channels using the channel selector on the remote.



STEP 1

Using a pin, press and hold the **PAIR** button on the back of the remote for **7 seconds**.



STEP 2

The LED on the remote will flash, indicating that the remote/channel has been deleted.

ADDING AN ADDITIONAL REMOTE

Up to 5 remotes can be paired to a motor.

If you want to add or replace a lost/damaged remote, follow the steps in 'Pairing the Remote' section in this guide.



Please separate storage cells and batteries from other types of waste and recycle them via your local collection facility.

We care about our environment.
Do not dispose of the appliance with usual household waste.
Give it to an approved collection point for recycling.



247blinds.co.uk