



Fitting & Caring for your Wooden Blind

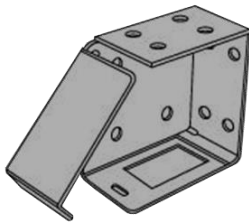
Fitting Time – Approx. 30 minutes.

!!! Important – Please ensure you read the child safety page thoroughly prior to fitting!!!

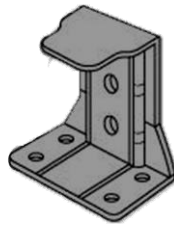
What comes with my blind?

Your new blind comes with a few basic pieces:

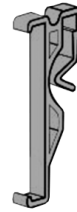
- The blind (of course).
- Box-end brackets
- Support brackets if your blind is over 100 CM width.
- A pelmet headrail cover & pelmet clips or Velcro tabs for your headrail cover.
- Child-safety clip for your wall



Box-End Brackets



Support Brackets



Pelmet Clips



Safety Cleat

Unfortunately, we're unable to send these with screws and wall plugs included, so we would always recommend you get the best screws and wall plugs for the area/surface you're fitting your blind into, prior to delivery.

What do I need to fit?

You don't need expert tools for the job, but we'd recommend the following:

- Pencil to mark out your bracket placements
- A screwdriver, or power drill to quicken things up.
- A measuring tape to help measure up bracket placements.
- The correct screws and wall plugs for the surface you'll be fitting your blind to. This could be plaster, wood or even steel so we'd recommend looking online to ensure you get the best fittings for your blind.



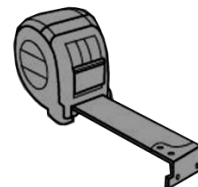
Pencil



Drill



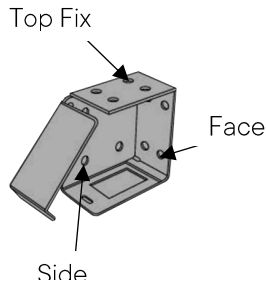
Screwdriver



Metal Measuring Tape

Fitting your blind -

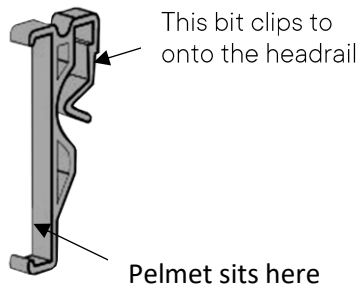
Fitting Time – Approx. 30 minutes, first time.



After unpacking your blind and ensuring everything is present, the next part is the fitting.

Fitting the brackets

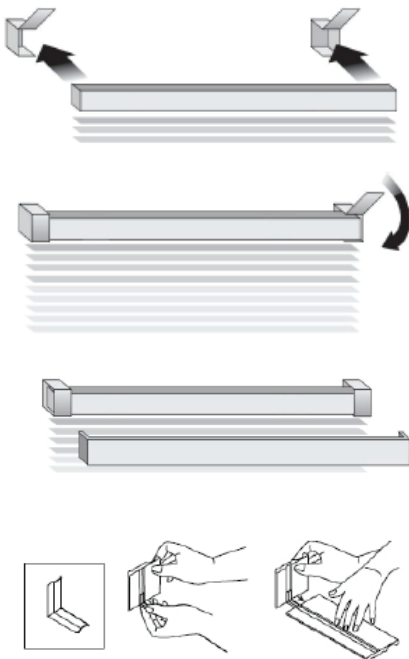
So, your box-end brackets come with a few options to fit, these are top fix, face fix and side fix. Decide what's best for your window (or door), always ensuring that the hinged flap is facing inwards into the room as shown on the left.



1. When you're happy with the positioning of your first bracket. Mark up the position of the bracket with your pencil, including marking up the drill holes.
2. Use your tape measure and measure across to the other side and do the same with the other bracket. Measuring up each time to ensure they align.
3. If your blind has C-shaped support brackets, you'll need to repeat on the pre-measure and markup on these, as well. Ensure that you are spacing these evenly across the headrail, being careful to not position them on top of the tilt/raise mechanisms, and away from cords and tapes.

Fitting the headrail

Attach your pelmet clips onto your headrail, it's easier to do this now VS when the blind is installed. A minimum of two are needed.



1. Remove the plastic end caps from the headrail & slide the blind into the brackets. Your cords and pelmet-clipped side needs to be facing outwards into the room. Ensure the headrail is securely sitting in the brackets.
2. Push down and snap the hinge doors shut, locking your blind into position.

Fitting the pelmet

1. Position the pelmet in front of your headrail and use the groove on the headrail to apply your pelmet clips.
2. If you have an exact measured blind, you may have a 'mitred' pelmet, with the pelmet cut with angled ends and extra end pieces. For a recessed blinds, you only need to apply the front pelmet.
3. Attach these end pieces by sliding the 'L' Shaped plastic brackets into the groove on your main pelmet and doing the same with the end pieces.

Care Tips

Both faux wooden and real wooden blinds keep up appearances by being used on a regular basis, Use the tilting feature, and open and close to help avoid dust build up.

For cleaning of the slats, though faux wooden blinds do have waterproof slats, be mindful of the cords (or tapes if you opted for this style).

For deep cleans, we'd recommend avoiding using bleach and cleaning fluids as these could damage the blind. Instead, use hot water and a damp cloth.

Otherwise, light dusting should keep things prim and proper.

Child Safety



All blinds present a strangulation risk due to cords and chains. Keep out of reach and ensure you install all safety devices that come with the blind, immediately after fitting

Ensure all cords are kept away from small children, vulnerable people, and pets. All blinds present a strangulation risk due to cords and chains.

Move beds, cots and climbable furniture away from windows. Do not tie cords together and make sure cords do not twist and create a loop.

This blind comes with a safety device for screwing to the wall & a cord with a breakable join. This is designed to break under pressure and must not be tampered with.

Install your safety device at the maximum distance possible from the control mechanism and at least 1.5 metres from the floor. Wrap any excess cord around the safety device, ensuring to always do this when the blind is not in use.

WARNING

Young children can be strangled by loops in pull cords, chains, tapes and inner cords that operate the product.

To avoid strangulation and entanglement, keep cords out of the reach of young children. Cords may become wrapped around a child's neck. Move beds, cots and furniture away from window covering cords.

Do not tie cords together. Make sure cords do not twist and create a loop.

