

247blinds

TWIST & FIT ROMAN BLIND

FITTING GUIDE

🕒 Fitting Time: Approx. 30 Sec

⚠️ **WARNING:** PLEASE READ THE INSTRUCTIONS BEFORE OPERATING THIS PRODUCT

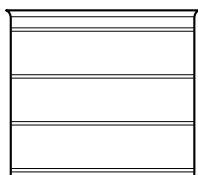


Specifically designed for recessed windows, this method eliminates the need for drilling or screws unlike traditional roman blind installations.

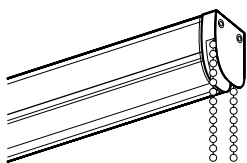
Adjust your Twist&Fit blind to any position within your recess, ideal for easy access to a top-opening window. The movable twist fitting ensures a secure installation on solid, flat walls.

WHAT'S IN THE BOX

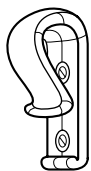
The blind



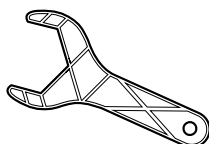
The headrail, with chrome chain



Child safety device



Adjustment tool



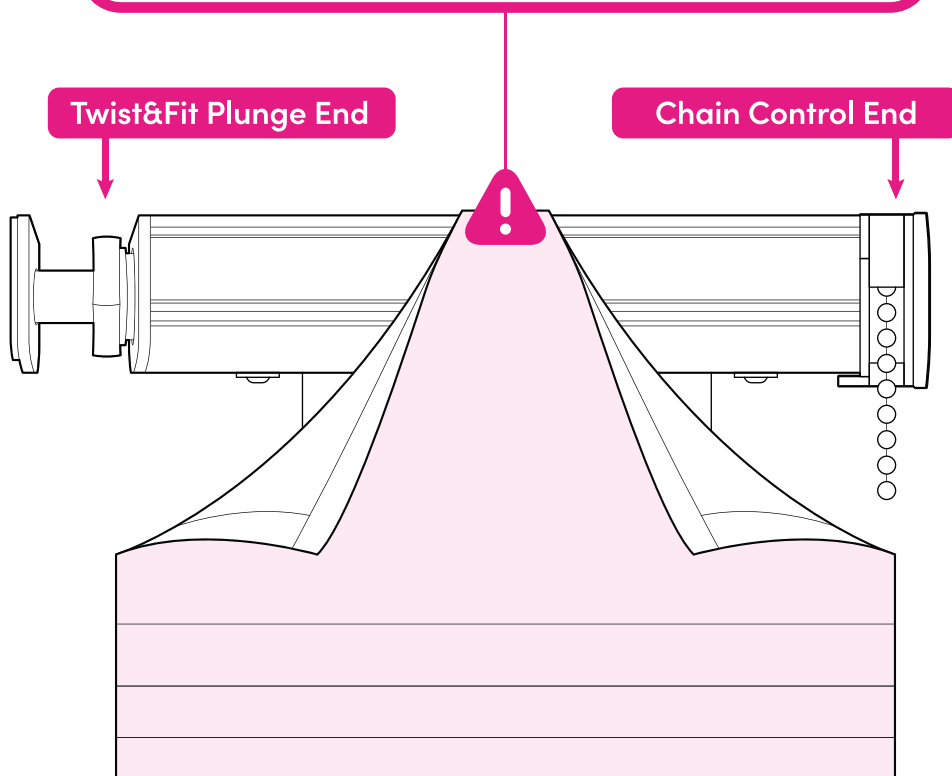
STEP 1 - INSTALLING THE BLIND

Unpack your blind on a clean, dry surface.

The fabric will be attached to the headrail. Pull back the fabric on each end of the blind, leaving some still attached in the middle.

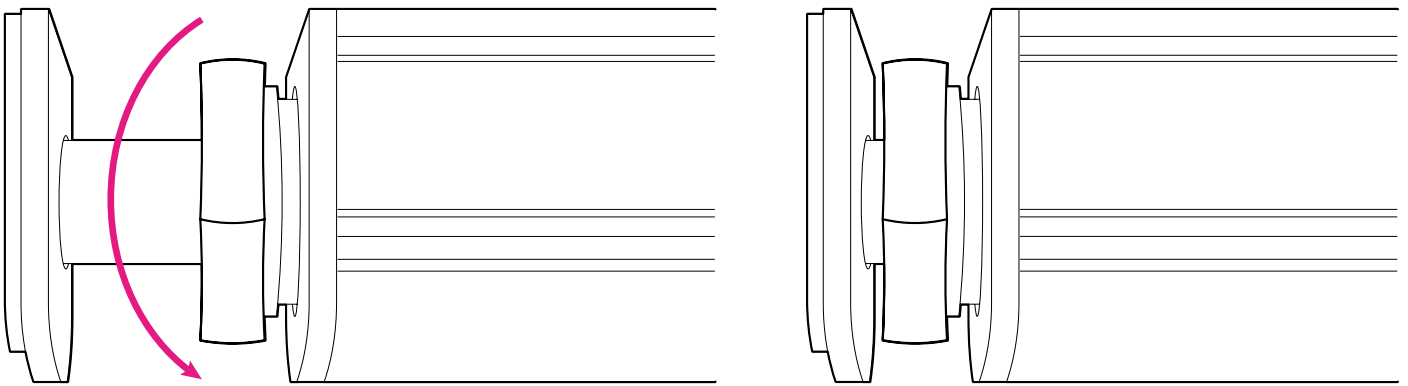
Lift the blind into the recess, plunge end first.

Ensure you only lift where the fabric is **NOT** covering the headrail to avoid creasing or damaging the blind.



NOTE: To minimise excess light bleed, we advise fitting the blind as deep into the recess as possible.

THE INSTALLATION OF THIS PRODUCT SHOULD BE CONDUCTED BY SOMEONE COMPETENT IN DIY.

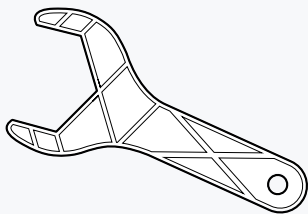


Maintain your grip on the blind and make adjustments to achieve a level position.

NOTE: To minimise excess light bleed, we advise pushing the blind as deep into the recess as possible.

Gently rotate the cog on the plunge end so it starts to move towards the blind fabric. For a right-hand chain control, twist the cog down towards the floor. For a left-hand control, turn it in the opposite direction.

Install the cord safety device securely to the wall. For full instructions, please refer to the back page.



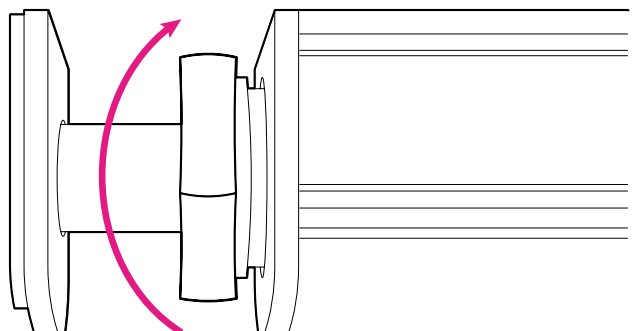
OPTIONAL (FOR DIFFICULT TO REACH BLINDS)

Your blind will come with a small adjustment tool, simply place this over the twist mechanism to ensure the tension is nice and tight.

STEP 2 - RELEASING THE BLIND

To release the blind, grip it firmly and twist the cog towards the wall and gently slide the blind out.

NOTE: If your window is exposed to high humidity or direct sunlight, occasional adjustments to the twist tension may be necessary throughout the year.



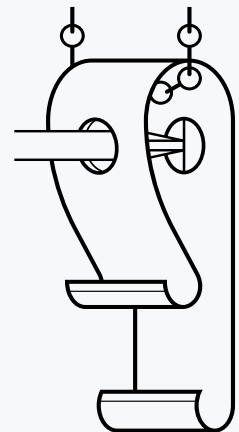
CHILD SAFETY

The safety device must be installed at the maximum distance possible from the control mechanism, and at least 1.5 metres from the floor to prevent looped chain becoming slack.

STEP 3 - INSTALLING THE SAFETY DEVICE

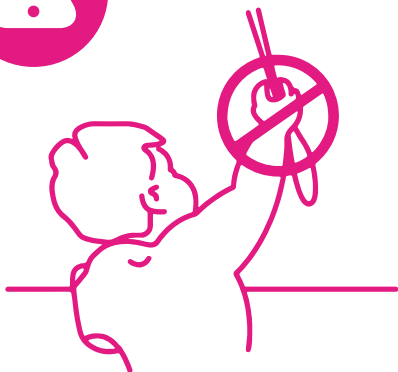
Place the safety device on the wall and mark the positioning of the 2 screw holes. Drill holes using a suitable drill bit. Place device into position ensuring the chain is fully taut. Screw the safety device securely to the wall using suitable fixings.

CHILDREN CAN STRANGLE IF A SAFETY DEVICE IS NOT INSTALLED. ALWAYS USE A SAFETY DEVICE TO KEEP CORDS AND CHAINS OUT OF REACH OF CHILDREN.



These blinds have been tested to BSEN16433:2014 and BSEN1634:2014 standard.

Raise cords/tapes used at the back of the blind feature safety break points, which are also designed to snap under pressure. Simply clip the back break points back together if this happens.



WARNING

Young children can be strangled by loops in pull cords, chains, tapes and inner cords that operate the product.

To avoid strangulation and entanglement, keep cords out of the reach of young children.

Cords may become wrapped around a child's neck. Move beds, cots and furniture away from window covering cords.

Do not tie cords together. Make sure cords do not twist and create a loop.