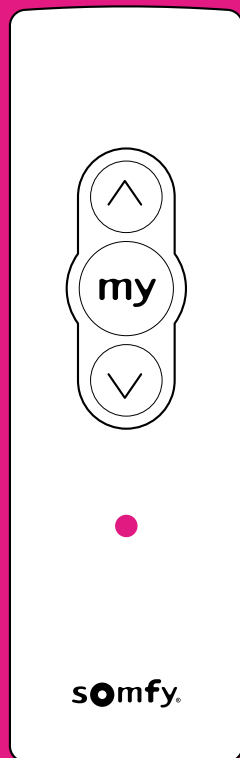


ELECTRIC ROLLER BLIND

OPERATING INSTRUCTIONS

POWERED by

somfy[®]



24/7blinds

ACTIVATING THE MOTOR

To protect your blind during transit, the motor has been placed into sleep mode.

OPTION 1: ACTIVATE BY CHARGING (RECOMMENDED)

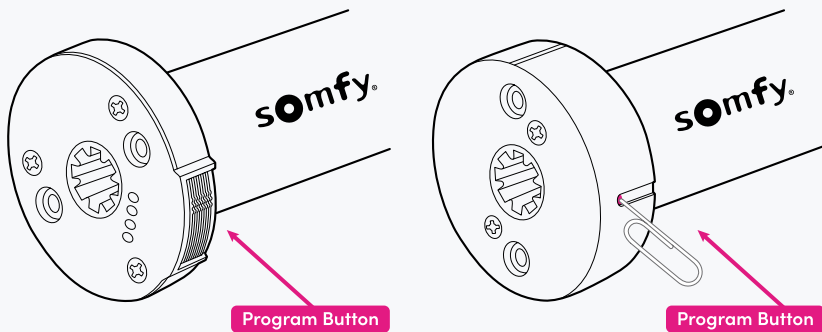
We recommend fully charging your blind before first use.

1. Connect your Somfy charger to the charging port at the end of the roller tube - depending on where your blind is fitted, you may need to take it down to do this.
2. When charging begins, the blind will perform a small jog (a slight movement), this confirms it has woken up from sleep mode.
3. Charge for approximately **4-5 hours**, until the charger shows a green light.

OPTION 2: ACTIVATE WITHOUT A CHARGER

If you don't have a charger available:

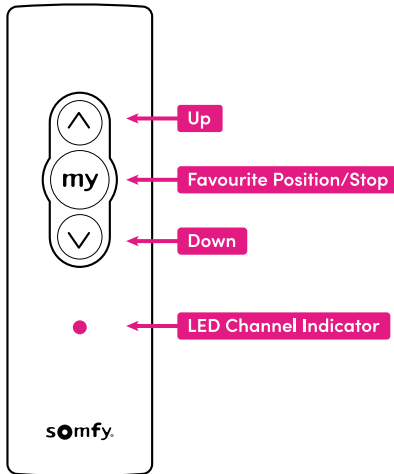
1. Press and hold the **PROGRAM** button on the motor head for **1 second** - the position of this will vary depending on the blind you've chosen:
2. The blind will jog once to confirm the motor is awake.



Your motorised blind will arrive with limited charge, so we recommend giving it a full charge as soon as you're able to.

Your motorised blind is now ready to use!

OPERATING YOUR BLIND



PAIRING YOUR REMOTE

Your remote should arrive pre-paired to your blind. If it isn't paired:

1. Press and hold the **UP** and **DOWN** buttons together
2. Release when the blind jogs

RAISING THE BLIND

1. Press the **UP** button
2. Press the **MY** button when the blind reaches your desired position

LOWERING THE BLIND

1. Press the **DOWN** button
2. Press the **MY** button when the blind reaches your desired position

When you stop the blind, the fabric may lower slightly to settle in a 'stopped' position.

CHANGING THE ROLL DIRECTION

This step is only necessary if you'd like to switch the functions of the **UP** and **DOWN** buttons.

IMPORTANT: Entering program mode resets any custom limits you have set. After changing roll direction, you'll need to reset the upper and lower limits.

Before changing the roll direction, place the motor into program mode.

1. Press and hold the **PROGRAM** button on the motor head for approximately **15 seconds**.
2. The blind will jog **3 times** while the button is being held.
3. The motor LED will **flash green** to confirm program mode is active.

CHANGE THE DIRECTION

1. Pair the remote to the motor by pressing **UP** and **DOWN** together until the blind jogs.
2. Press either **UP** or **DOWN** to move the blind slightly.
3. Press and hold **MY** for **2 seconds** until the blind jogs.
4. The roll direction will now be reversed.
5. Follow the Setting New Limits section below to reprogram your limits.

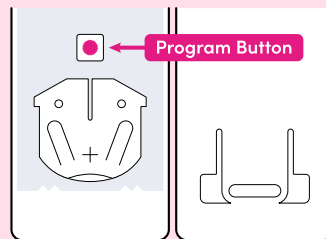
SETTING UPPER AND LOWER LIMITS

The upper and lower limits tell the motor where the blind should stop when fully raised or fully lowered. Your blind should arrive with the limits set based on its size. However, you can adjust them at any time. You may also need to reset the limits if the blind was not properly awakened before first use.

SETTING NEW LIMITS

1. Follow the steps above to put the motor in program mode.
2. Pair the remote to the motor by pressing **UP** and **DOWN** together until the blind jogs.
3. Use the remote to move the blind to your desired upper limit.
4. Press **MY** to stop the blind. The blind will jog once.
5. Briefly press **DOWN** and **MY** together to save the upper limit. The blind will begin moving down.
6. Press **MY** when the blind reaches your desired lower limit.
7. Press **UP** and **MY** together. The blind will travel to and stop at the programmed upper limit.
8. Press and hold **MY** for **2 seconds**. The motor will jog once to confirm the limits.
9. Briefly press the **PROGRAM** button on the back of the remote. The motor will jog once to complete the process.

NOTE: Your blind is sent out with a Somfy Situo remote as standard. On this remote, the program button is located beneath the casing. If you've purchased another Somfy remote, the program button may be visible on the back without removing the casing.



SETTING A FAVOURITE POSITION

The **MY** button can be programmed to move the blind to a favourite position.

1. Move the blind to your preferred position using the **UP** or **DOWN** buttons.
2. Press and hold the **MY** button for **up to 5 seconds** until the blind jogs.
3. The position is now saved.

To move the blind to your favourite position, simply press **MY**.

To change the favourite position, repeat the steps above.

INCREASING THE SPEED

1. Press and hold **MY** and **UP** together until the blind jogs once.
2. Each jog increases the speed by one level.
3. There are 4 speed settings available.
4. The maximum speed has been reached when the blind briefly moves 3 times in one direction, then 3 times in the other direction.

DECREASING THE SPEED

1. Press and hold **MY** and **DOWN** together until the blind jogs once.
2. Each jog decreases the speed by one level.
3. There are 4 speed settings available.
4. The slowest setting has been reached when the blind briefly moves 3 times in one direction, then 3 times in the other direction.

PAIRING A SECOND REMOTE

1. Press and hold the **PROGRAM** button on the back of your original remote until the blind jogs once.
2. Press and hold the **PROGRAM** button on the back of your new remote until the blind jogs once.
3. The new remote is now paired and ready to use.

To remove the second remote, simply repeat the steps above.

FACTORY RESET

To restore your motor to factory settings:

1. Press and hold the **PROGRAM** button on the motor head for approximately **12 seconds**.
2. The blind will jog **3 times** to confirm it has reset.



Please separate storage cells and batteries from other types of waste and recycle them via your local collection facility.

We care about our environment.
Do not dispose of the appliance with usual household waste.
Give it to an approved collection point for recycling.



247blinds.co.uk