

247blinds

SKYLIGHT BLIND

FITTING GUIDE

🕒 Fitting Time: Approx. 20 Min

⚠️ **WARNING:** PLEASE READ THE INSTRUCTIONS BEFORE OPERATING THIS PRODUCT



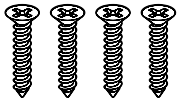
THE INSTALLATION OF THIS PRODUCT SHOULD BE CONDUCTED BY SOMEONE COMPETENT IN DIY.

WHAT YOU'LL NEED

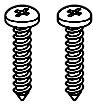
Screwdriver



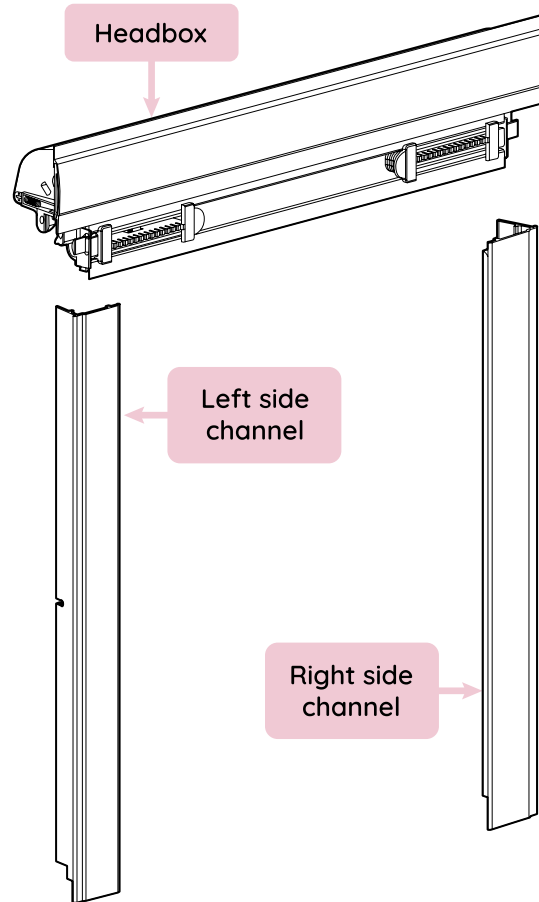
4 x countersunk screws



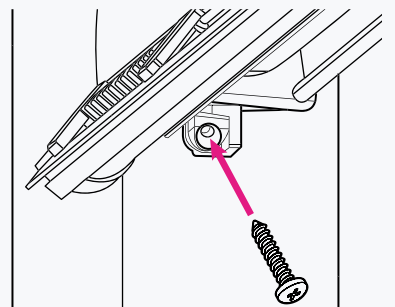
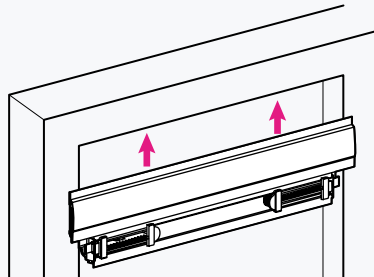
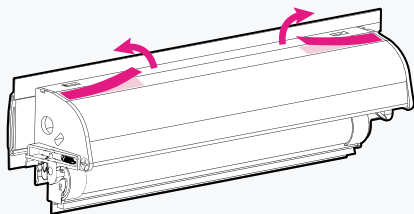
2 x normal screws (optional)



WHAT'S IN THE BOX



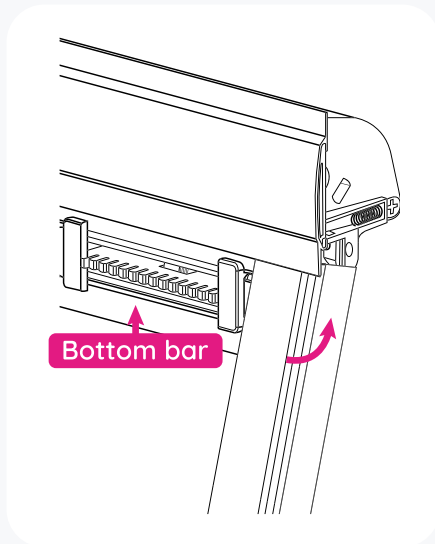
STEP 1



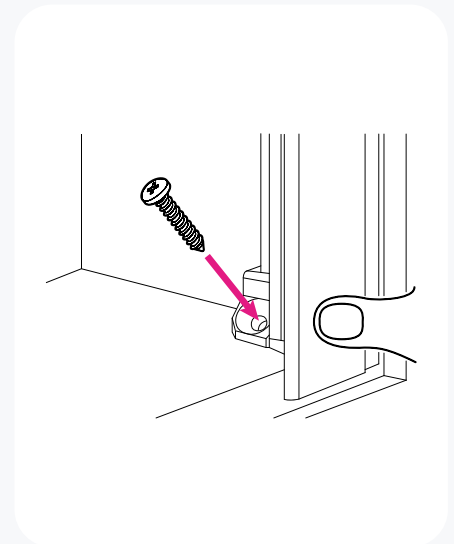
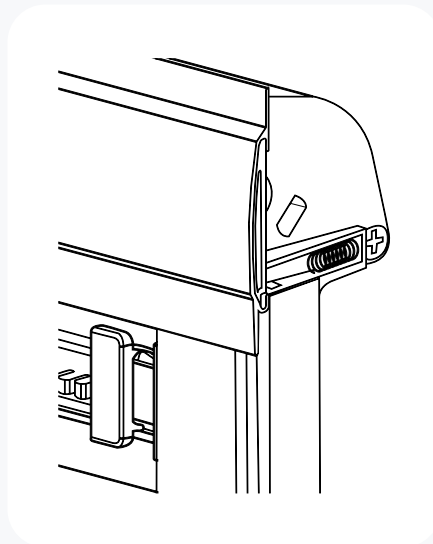
Wipe down your window and window frame before fitting to make sure it is clear of dust and debris. Peel the backing from the red double sided tape on the headbox and secure the headbox to the top of the window.

Secure the headbox to the window frame at each side using 2 of the countersunk screws.

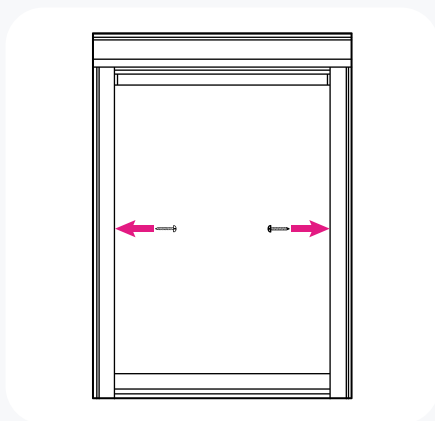
STEP 2



Slide one of the side channels, at a 90 degree angle, in to the bottom bar end cap to position under the headbox lip. Push the lower end of the channel in against the bottom edge of the window.



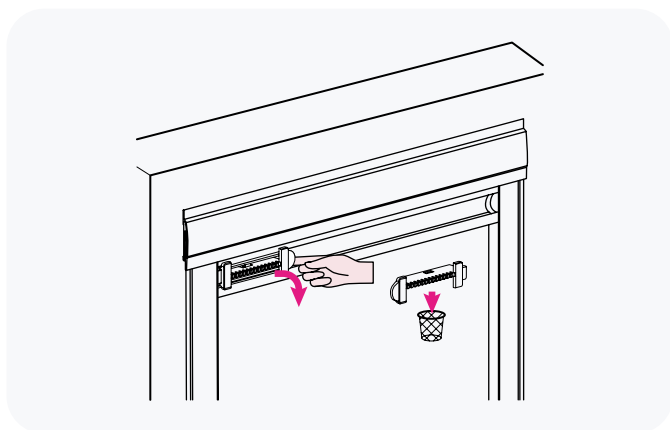
Secure the side channels using 2 other countersunk screws. Repeat with the other side channel.



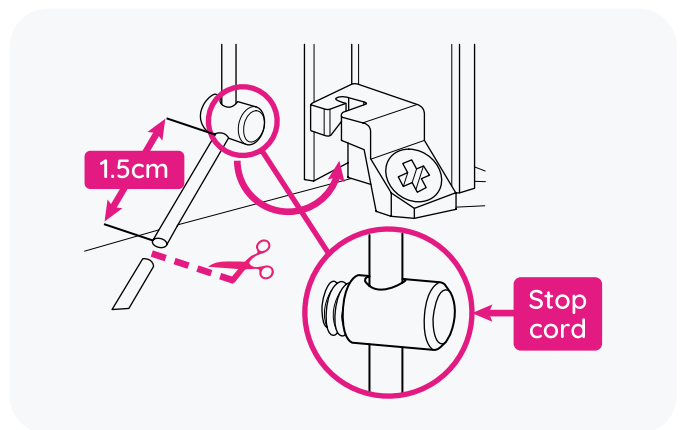
OPTIONAL

For larger windows (size 04 or bigger recommended), you may wish to secure further using 2 normal screws, positioned through the side channels in to the window frame.

STEP 3

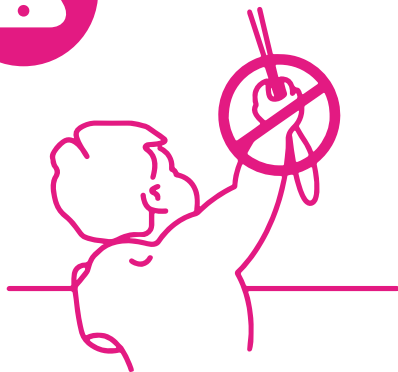


Remove the red cord retainers and unwind the cord. These can be disposed of. Pull the cord to the bottom of the side channel and secure in to the locking mechanism.



Trim any excess cord to 1.5cm out of the locking mechanism - make sure that the blind works correctly before trimming any excess cord.

CHILD SAFETY



WARNING

Whilst Skylight blinds are child safe by design, as with all window dressings they still pose a risk if used unsafely or installed in an unsafe location.

To ensure your blind is as safe as possible please ensure all beds, cots or furniture that can be climbed is moved away from the window.

While these blinds do pose minimal risk in regards to choking or strangulation they can still be pulled off the brackets and cause a risk of crushing or injury.

If the blind is pulled from the window frame, ensure there is no damage, and install the blind back onto your window.