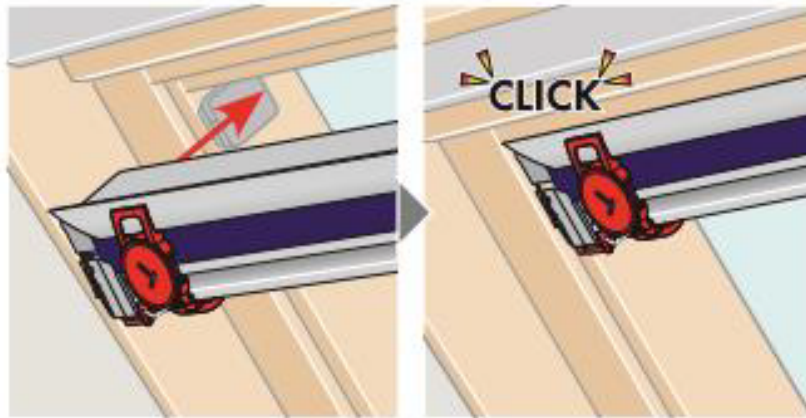


## 247Blinds Skylight Fitting Instructions (Velux Branded)

You will receive a Headbox, Left Side Channel and Right Side Channel and a left and right bottom clip. You will need a screwdriver as well as several screws and rawl plugs - 8 screws are recommended for a safe installation but a minimum of 4 should be fitted.

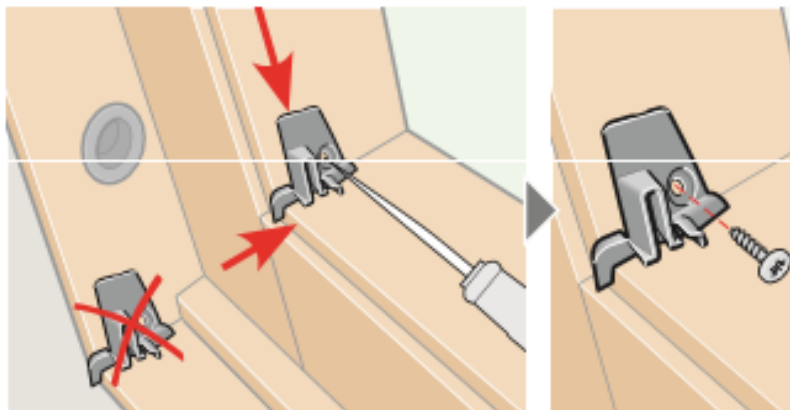
### Step 1

Wipe down your window and window frame before fitting to make sure it is clear of dust and debris. Position the headbox in the top of the (inner) window frame and push this in to place until you hear it click.



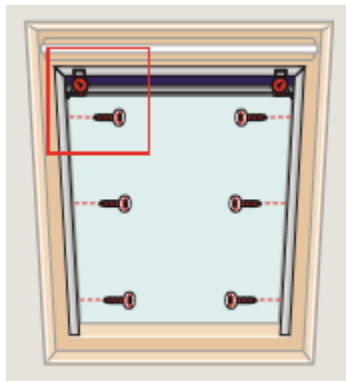
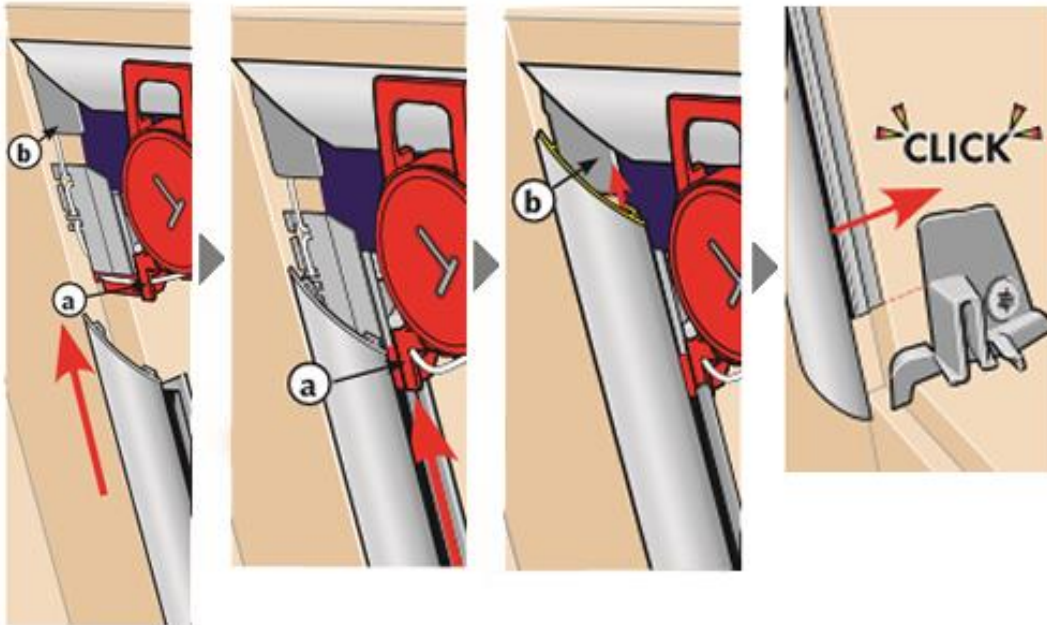
### Step 2

Position one of the bottom clips in the bottom corner of the (inner) window frame and screw this in place to secure it. Repeat with the remaining bottom clip on the other side.



### Step 3

Take one of the side channels and position this over the correct side of the (inner) window frame. The angled end should be positioned to the top. Push the side channel up towards the headbox until the corner meets the corner of the headbox (b). Make sure that the cord remains free (a). Push the bottom edge of the side channel in to the bottom clip until you hear it click. Repeat process with the other side channel.



### Step 4

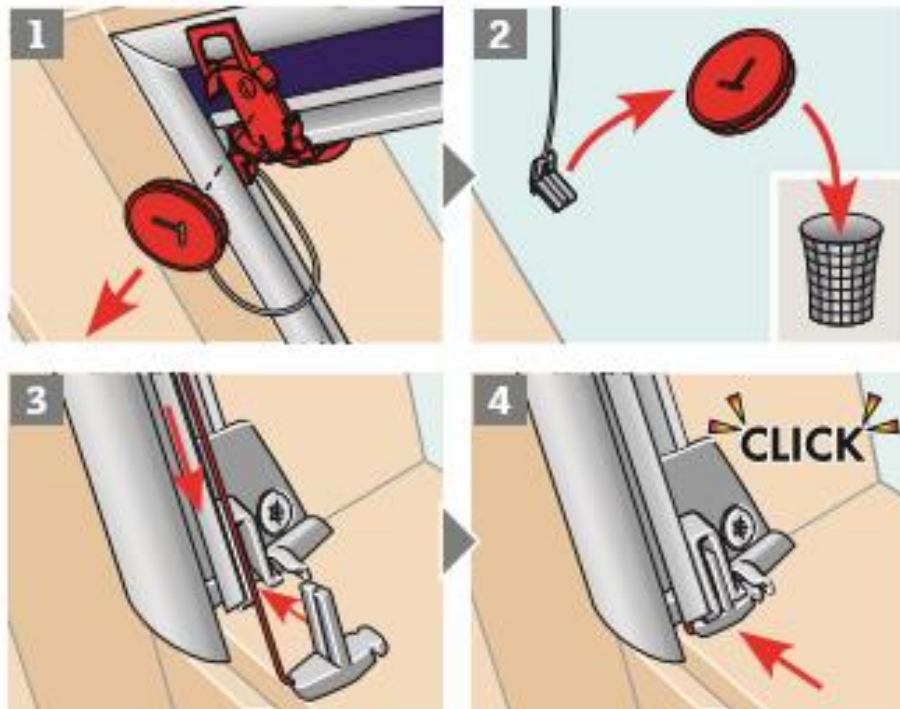
For larger windows (size 04 or bigger), secure the side channels further by screwing through the holes in the side channels and in the window frame.

We recommend at least 1 screw in each side but for larger windows, you may wish to fit up to 3 screws on each side.

NB. Once the side channels are screwed in place, you should see that there are no gaps around the headbox and channels.

## Step 5

Remove the red cord retainers (circular) from the top of the headbox and unwind the cord. The red circles can be disposed of. Pull the cord to the bottom of the side channel and secure the plastic 'T' in to the bottom clip. The remaining red clips on the headbox can be removed and disposed of.



## Troubleshooting/Re-Tensioning

The blind is supplied pre-tensioned and should work correctly once fitted. If you would like to adjust this, please adjust as follows;

If the blind does not stay in position or raises on it's own accord, you can add additional tension to the cords by moving the cord stops higher on each side channel.

If the blind is difficult to raise or lower then there is too much tension on the cord. Just lower the position of the cord stops on the cord on each side channel.

If the bottom bar does sit level, then reduce the tension only on the side that sits lowest.