

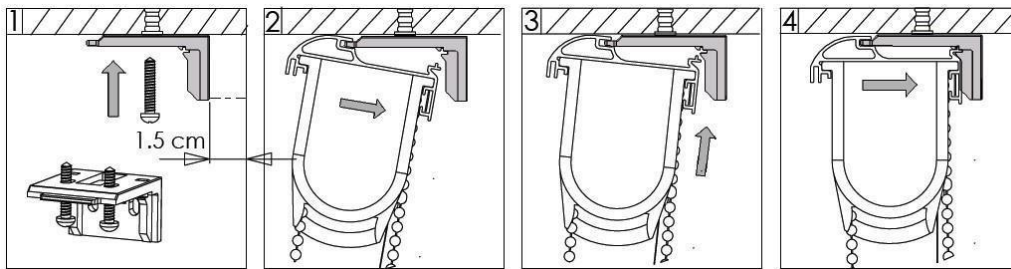
Vista Blind Fitting Instructions:

TOP FIXING (A)

When fitting using the top fixing method simply use the holes on the top of the bracket to screw directly up into the lintel/ceiling around 1.5cm away from your window (picture 1) this is so the cord and back material runs smoothly away from your window, if you have handles that sticks out further than this, then fit further away from the window to avoid it catching.

Then simply hook the front of the head rail over the front of the bracket (picture 2). Once hooked in at the front push the back of the bracket up to level out the head rail then push back until you hear it click into place (picture 3 and 4).

A

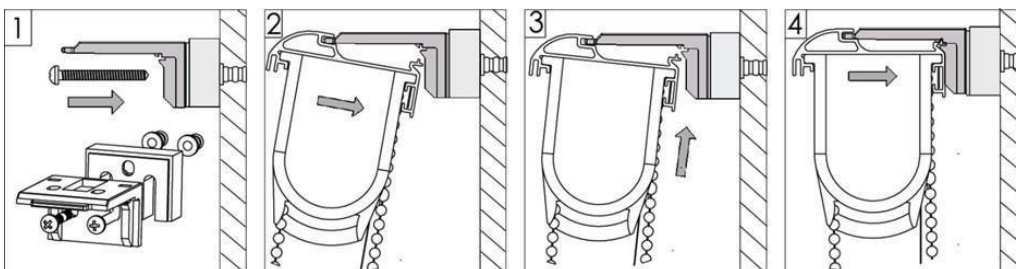


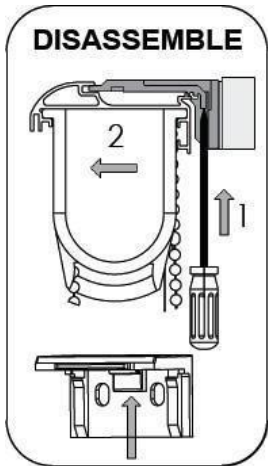
FACE FIXING (B)

When Fitting using the Face fixing method use the holes at the back of the bracket. You may need to fit a wooden block/spacer to keep the blind away from the handles on your window as seen in picture A.

Then simply hook the front of the head rail over the front of the bracket (picture 2). Once hooked in at the front push the back of the bracket up to level out the head rail then push back until you hear it click into place (picture 3 and 4)

B





Taking the Blind down:

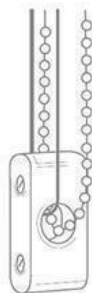
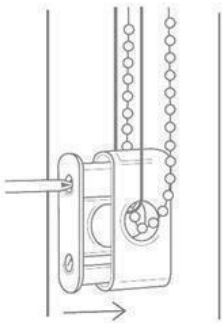
To take the blind down simply push a screwdriver up behind the blinds headrail up into the back of the bracket then pull the blind away from the wall and it should simply come away from the bracket.

WARNING

Young children can be strangled by loops in pull cords, chains, tapes and inner cords that operate the product. Always use a safety device to keep cords or chains out of reach of children.

To avoid strangulation and entanglement, keep cords out of the reach of young children. Cords may become wrapped around a child's neck. Move beds, cots and furniture away from window covering cords.

Do not tie cords together. Make sure cords do not twist and create a loop.



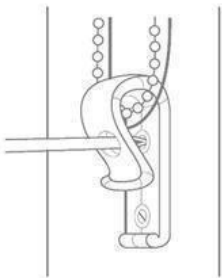
SAFETY DEVICE

The safety device must be installed at the maximum distance possible from the control mechanism to prevent looped chain becoming slack.

Place the safety device on the wall and mark the positioning of the 2 screw holes.

Drill holes using a suitable drill bit.

Place device into position ensuring the chain is fully taut.



RETAINING DEVICE

Screw the retaining device using suitable fixings ensuring the device is fully closed.

(If your blind is supplied with our child safe draw rod control option, there is no requirement to fit an additional child safety device)